

TEE comprehensive views

Kareem Mahmoud, MD

Cairo University

Indications

- Information beyond TTE
 - Aorta
 - LAA
 - Prosthesis
 - Poor window: MV- chest wall problem
- Intervention
 - Valvular and aortic surgeries
 - CABG
 - Noncardiac surgery
 - Catheter: LAA closure- TAVI- ASD closure

Preparation

- Fasting 6 h
- IV access
- Screening for indication and contraindications
- Monitors especially if high risk patient (HR- BP- SO₂)
- Oxygen source
- Suction device
- Airway equipment

Sedation

- Local anesthetic “Lidocaine spray”
- Benzodiazepines: Midazolam
 - Rapid onset: 1-2 min
 - Shot duration: 15-30 min
 - Amnesia
- Fentanyl - Propofol

How to insert?

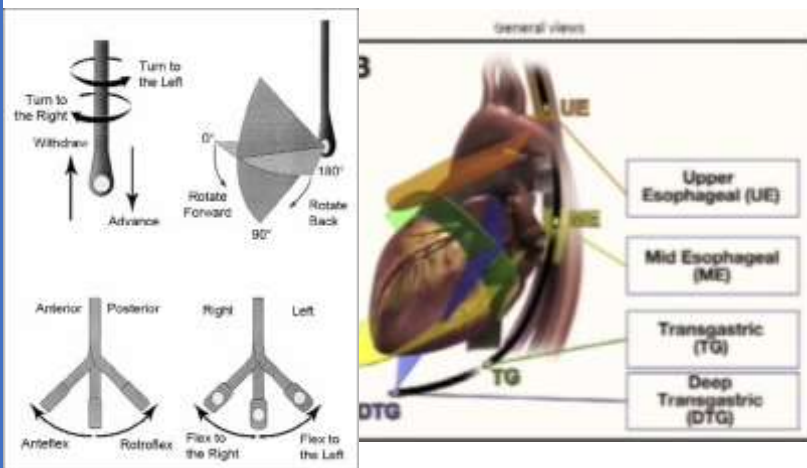
- Bite block
- Lateral Decubitus
- Check the probe
- Slight anteflexion
- Ask the patient to swallow when advancing

After procedure

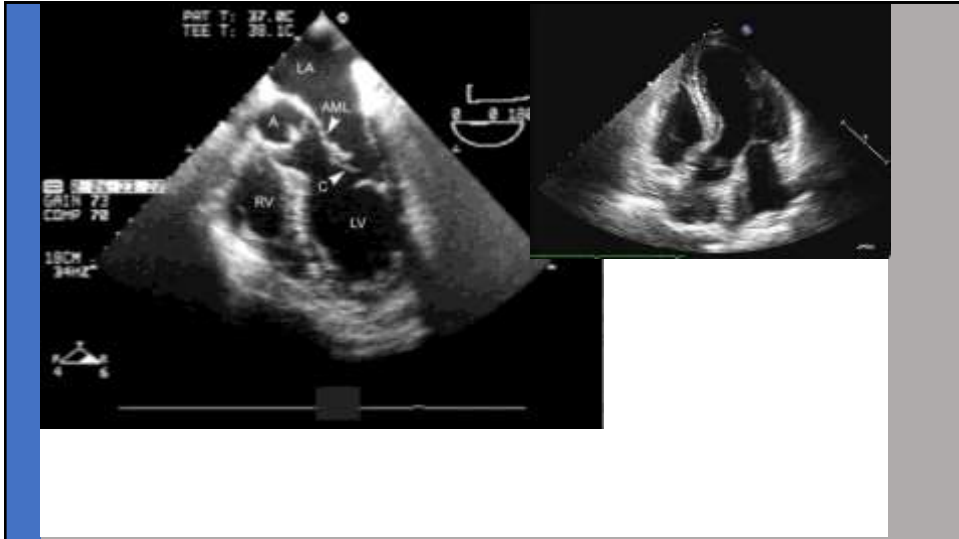
- Check the patient
- NPO for 1-2 h
- Consult if dysphagia



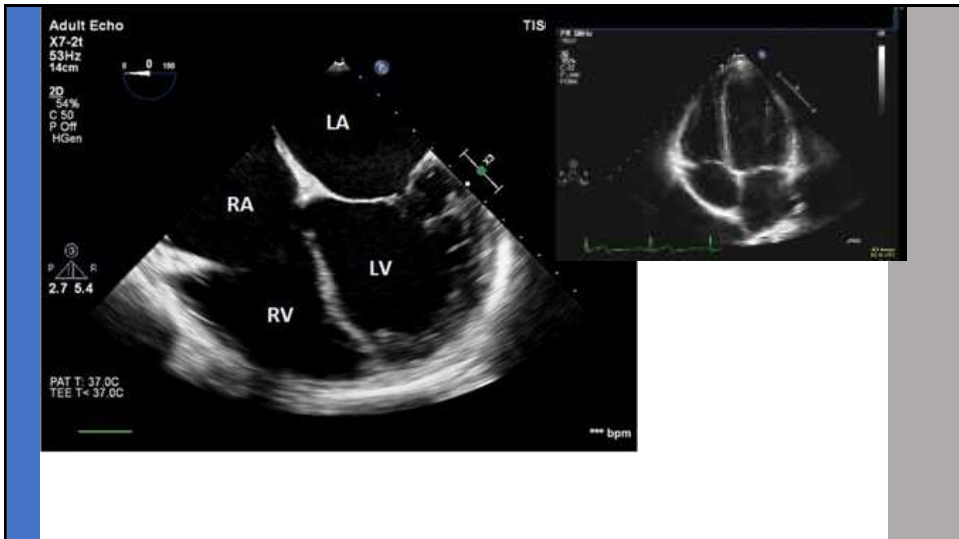
Probe



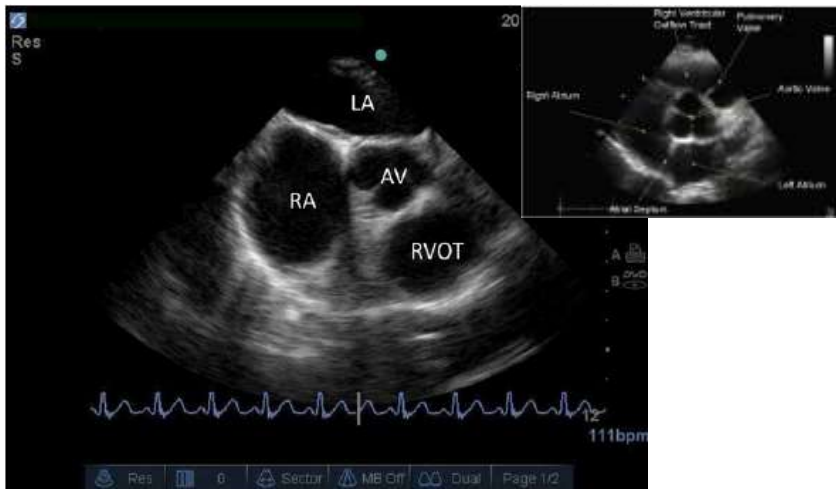
TEE probe manipulation



ME 5C view



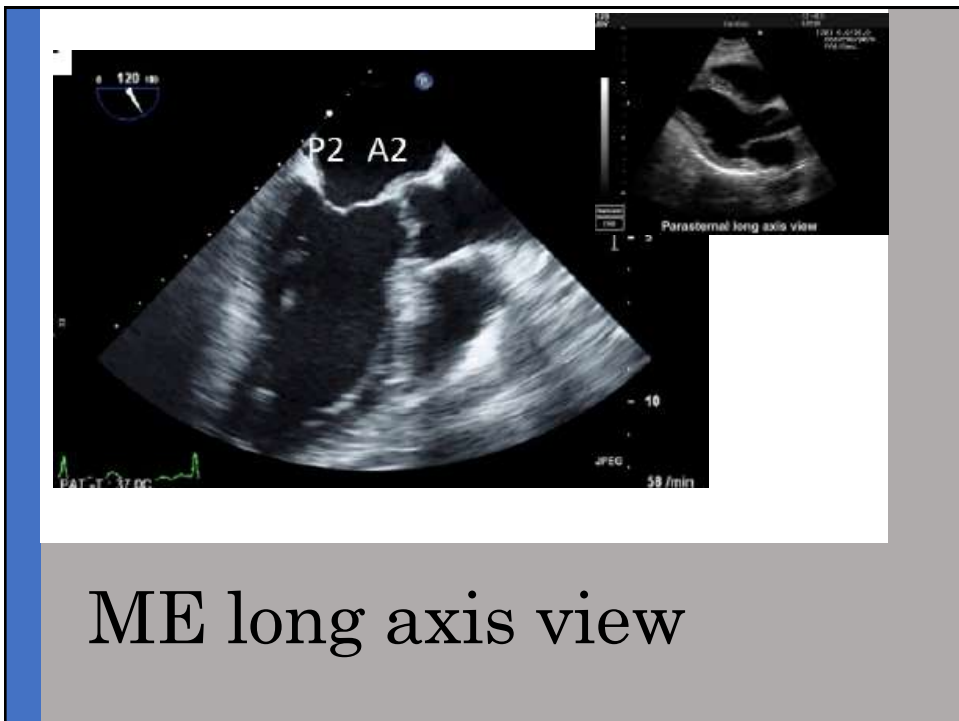
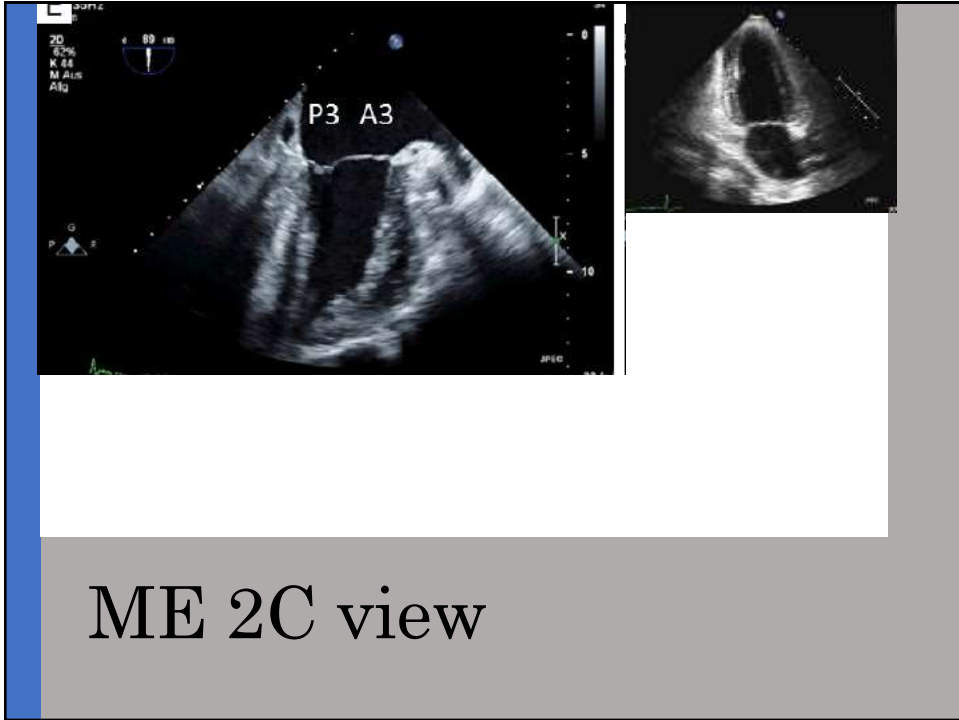
ME 4C view



ME SAX



ME MC view

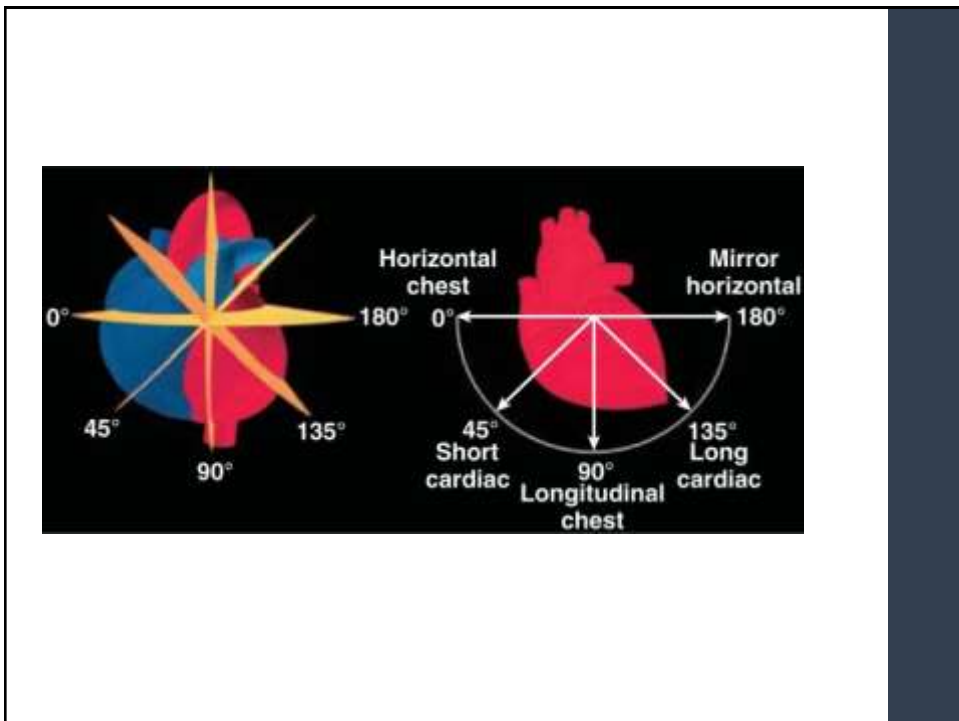
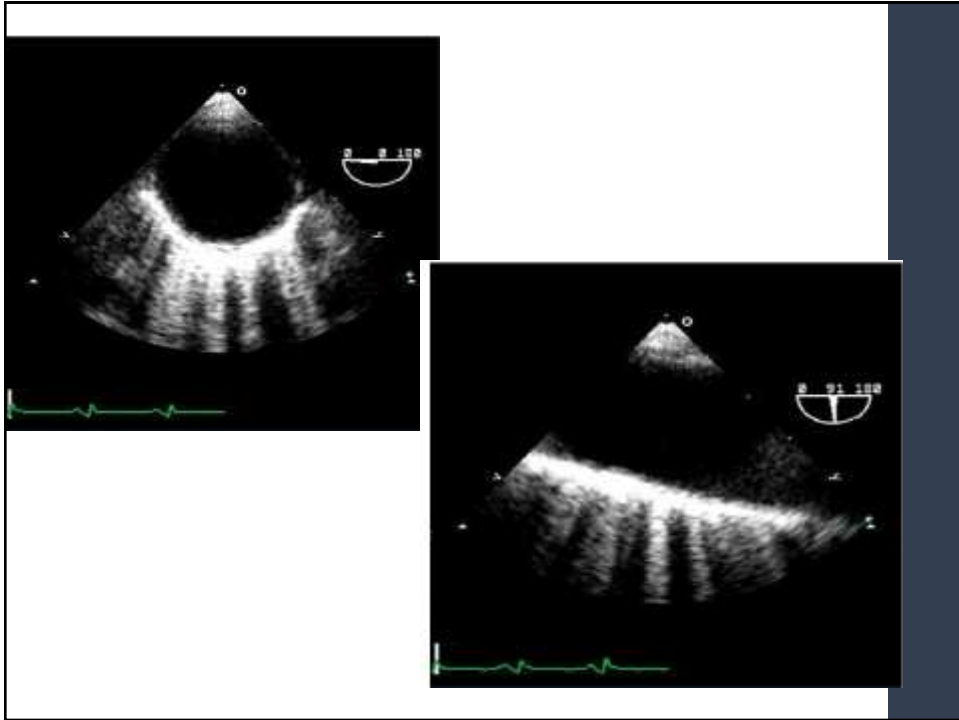


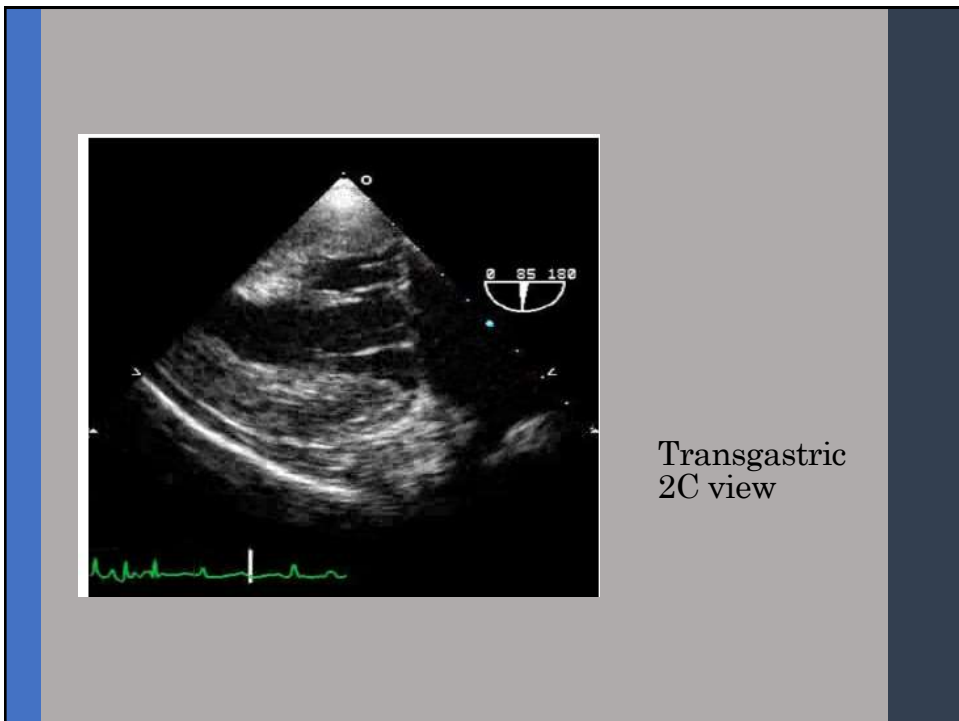
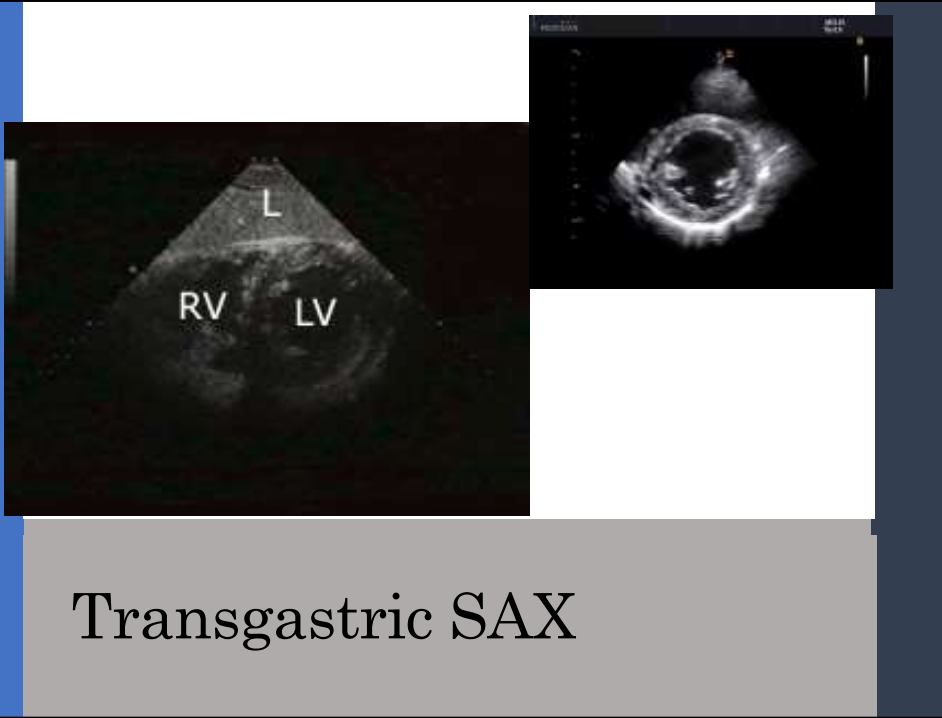


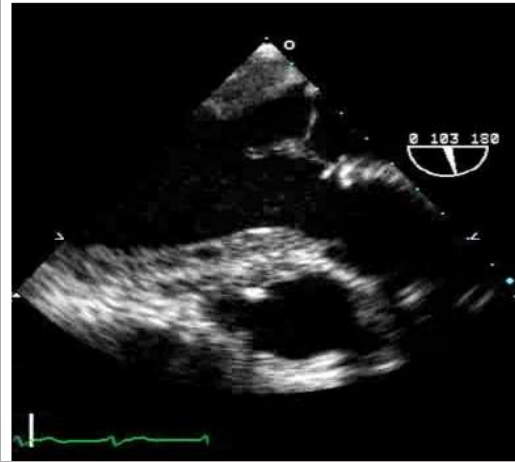
ME AV LAX view



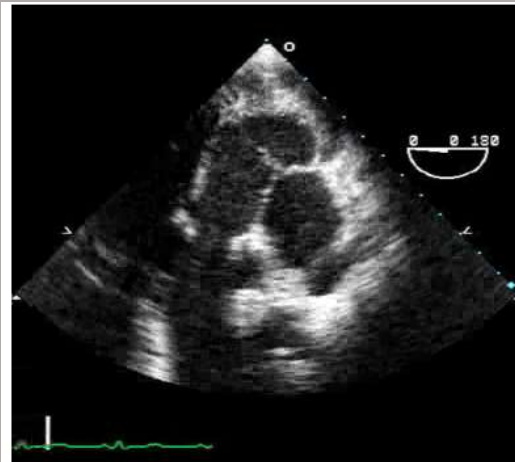
ME bicaval view



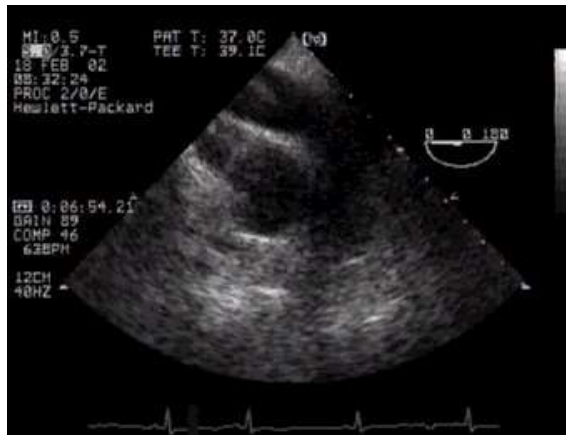




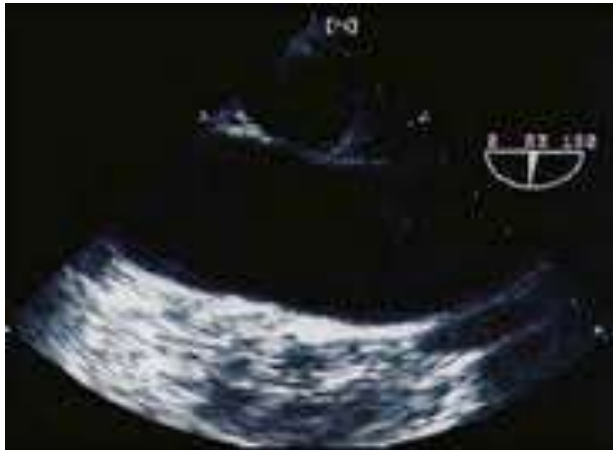
Transgastric
LAX



Deep
transgastric
view



UE Ascending aorta SAX
view



UE Ascending aorta LAX
view

